






**41A Slocombe Street Goulburn NSW**

5  2  6 

\* This remarkable property offers a unique blend of superior quality workmanship & thoughtful design that you can only achieve when building a "forever home". A level of excellence that extends to unseen features intended to make family life more practical whilst still offering the contemporary features you would expect to find in a high grade residence

\* Located in one of Goulburn's most sought after residential precincts the property has the benefit of elevation without severe slope so you can enjoy brilliant views & a summer breeze minus the mountain goats

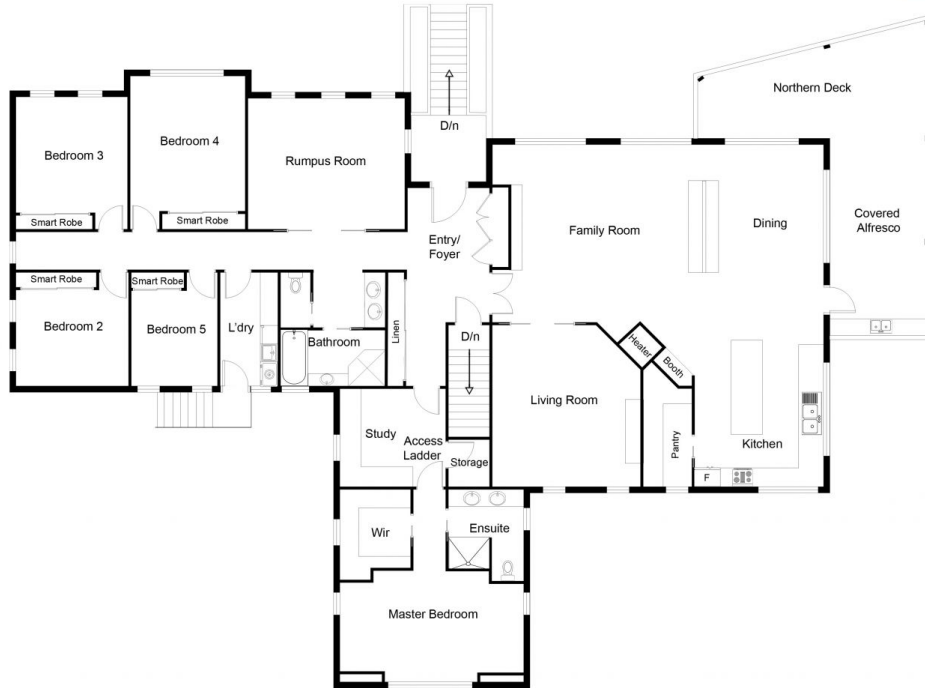
\* The home offers 5 genuine bedrooms with a flexible floor-plan that can provide more options for extra bedrooms and even self-contained accommodation for in-laws or guests if required

**Type** : House  
**Land Size** : 1750 sqm  
**View** : <https://www.goulburnrealestate.com.au/sale/nsw/southern-tablelands/goulburn/residential/house/6091225>



**Barry McEntee**  
**02 4822 8711**

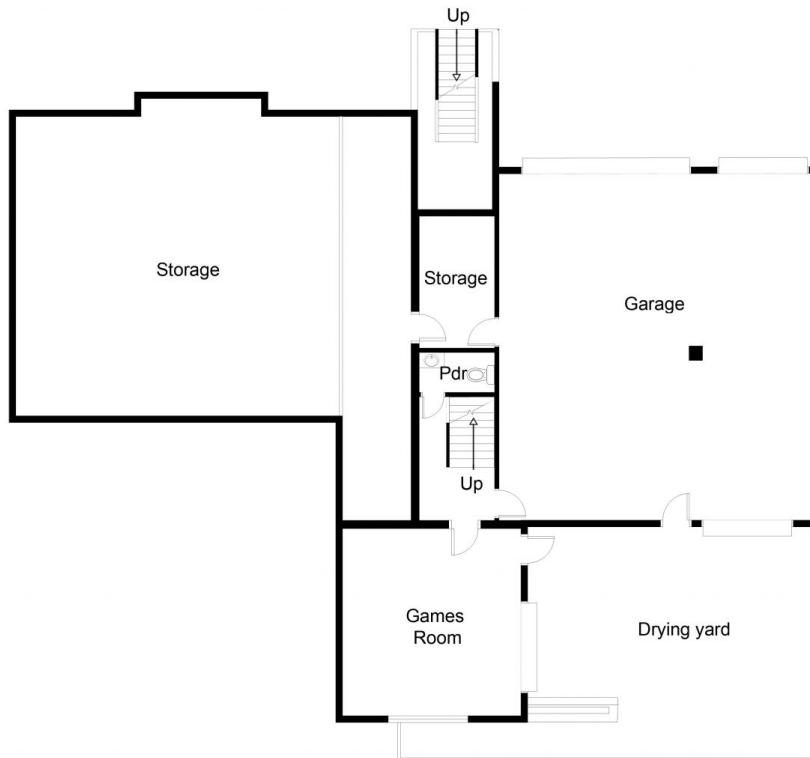
[For full version visit the website](https://www.goulburnrealestate.com.au)



**UPPER FLOOR PLAN**

This floor plan including furniture, fixture measurements and dimensions are approximate and for illustrative purposes only. Boxbrownie.com gives no guarantee, warranty or representation as to the accuracy and layout. All enquiries must be directed to the agent, vendor or party representing this floor plan.

**41A Slocombe Street, Goulburn**



**LOWER FLOOR PLAN**

This floor plan including furniture, fixture measurements and dimensions are approximate and for illustrative purposes only. Boxbrownie.com gives no guarantee, warranty or representation as to the accuracy and layout. All enquiries must be directed to the agent, vendor or party representing this floor plan.

**41A Slocombe Street, Goulburn**