




12 Mewburn Drive Goulburn NSW

5  2  2 

* Behind the mild-mannered exterior lies a family home of huge proportions offering up to 5 bedrooms with plenty of living space and room to move

* The flexible floorplan offers either 5 bedrooms or 4 with a study which has external access and would be ideal for a home office/business

* The main bedroom is enormous and comes complete with walk-in robe and very large ensuite, the room is so big it could easily provide a parent's retreat as well

* The home theatre is sunken, has plenty of space and is fully insulated so you can blast out the blockbuster movies without waking the family

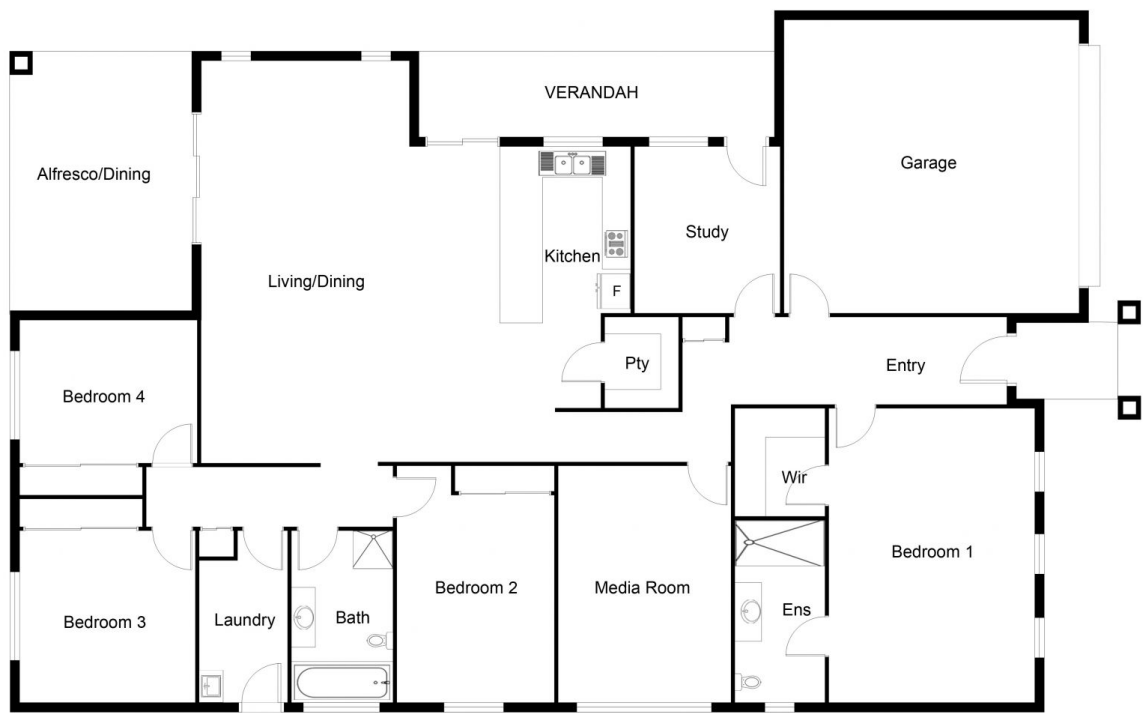
* Modern living at its best with open plan kitchen, dining and family room which opens to a brilliant Alfresco entertaining area with sunny north aspect

Type : House
Price : \$ 618,000
Land Size : 742 sqm
View : <https://www.goulburnrealestate.com.au/sale/nsw/southern-tablelands/goulburn/residential/house/6091189>



Barry McEntee
02 4822 8711

[For full version visit the website](https://www.goulburnrealestate.com.au)



FLOOR PLAN

This floor plan including furniture, fixture measurements and dimensions are approximate and for illustrative purposes only. Boxbrownie.com gives no guarantee, warranty or representation as to the accuracy and layout. All enquiries must be directed to the agent, vendor or party representing this floor plan.



12 Mewburn Drive, Goulburn