

9 Abbey Road Goulburn NSW

5 2 2

* This quality built, modern home offers a very flexible floorplan that would suit families of all sizes and even cater for a home business

* There are 4 large bedrooms all with built ins + a separate study. The master bedroom is segregated and boasts a colossal walk in wardrobe and luxurious ensuite

* Multiple formal and informal living spaces include a separate lounge area, open plan family room and dining area

* Stunning kitchen - features a walk in pantry, gas cook top, quality appliances and neutral colour palette

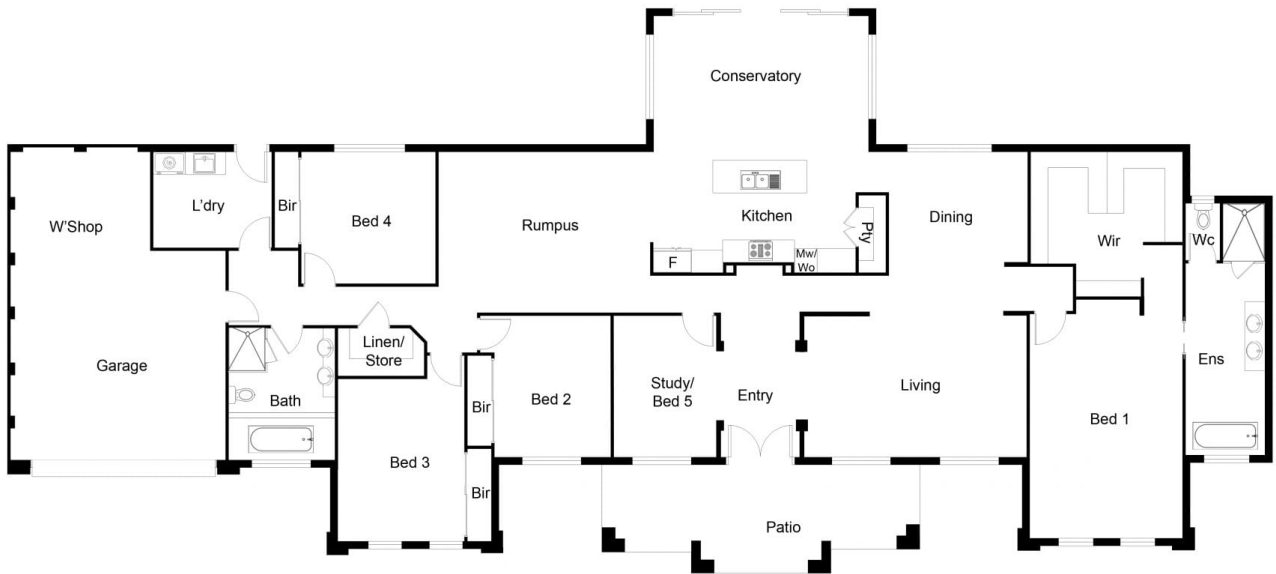
* Light and bright, the hub of the home benefits from the north-east aspect and overlooks the Balinese inspired outdoor entertaining area and pool - your very own private oasis at your fingertips

Type : House
Price : \$ 859,000
Land Size : 2026 sqm
View : <https://www.goulburnrealestate.com.au/sale/nsw/southern-tablelands/goulburn/residential/house/6091158>



Barry McEntee
02 4822 8711

[For full version visit the website](https://www.goulburnrealestate.com.au)



FLOOR PLAN

This floor plan including furniture, fixture measurements and dimensions are approximate and for illustrative purposes only. Boxbrownie.com gives no guarantee, warranty or representation as to the accuracy and layout. All enquiries must be directed to the agent, vendor or party representing this floor plan.

9 Abbey Road, Goulburn